

# seko

## Solutions for **Cleaning & Hygiene**



Your Choice,  
Our Commitment

# Contents

## Kitchen Hygiene

page 6

WareMini  
WareBasic  
WareMax EVO  
Drain Series  
D3000  
Sierra  
Tahoe  
DR-2000  
Encapsulator  
Encapsulator Plus  
W-6000  
Singleshot

## Laundry

page 20

OPLMini L  
OPL Basic  
OPLAdvantage  
Wash Series  
WashMulti Air  
WashMulti Peri  
WashDose Peri  
System with Flexibility  
Alpine  
L5000Plus  
L5000XL

## Surface Cleaning

page 38

ProMax  
ProSink-R  
ProFaucet  
ProSpray  
ProTwin  
ProTwin Foam Kit  
JetNeat  
SekureMax  
SekureDose  
ProDose-R  
BetaJet

## Beta Technology Specialty

page 56

Pool Shot  
Pool 2000

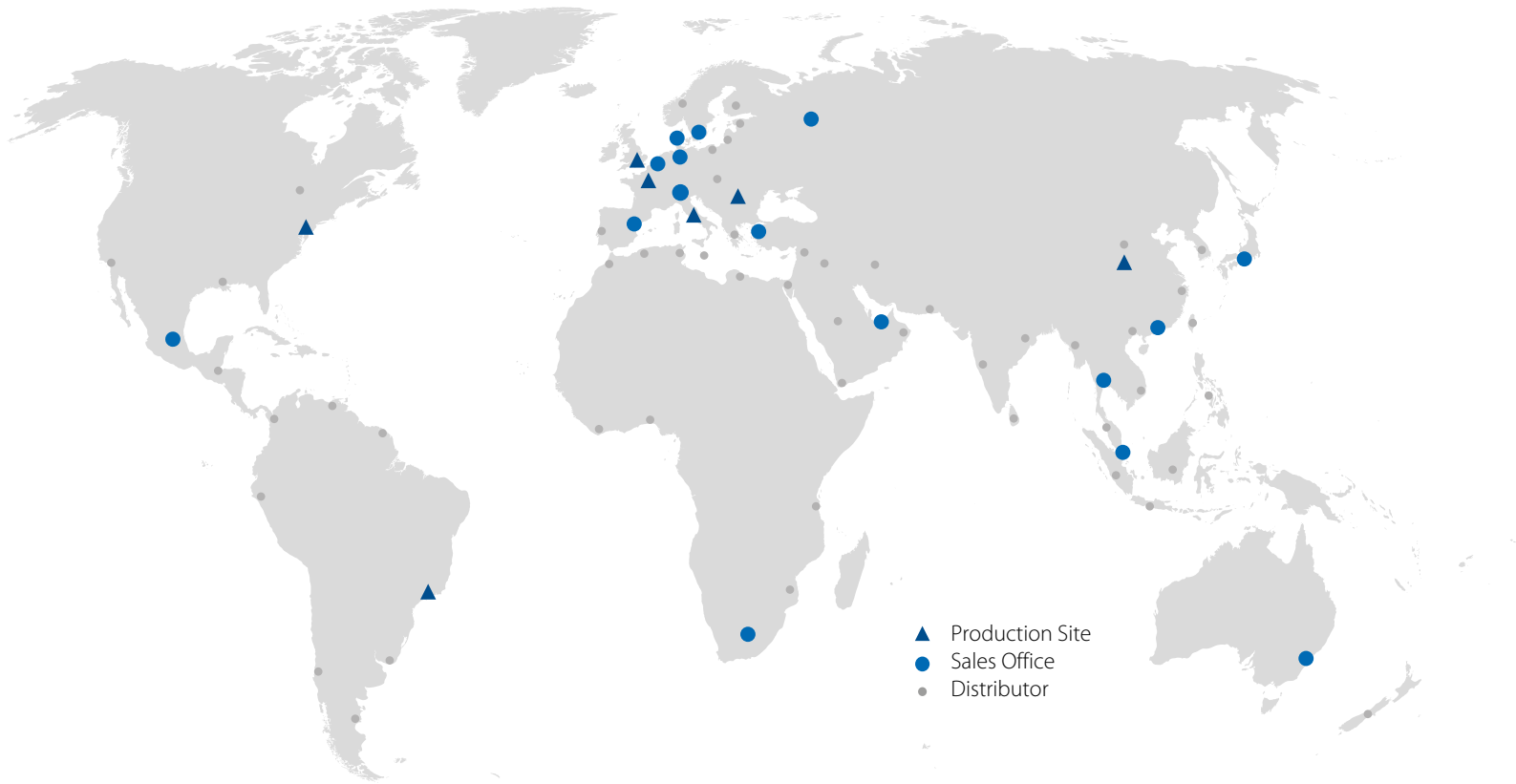
## Notes

page 60

## Additional Information

page 50





# Globally Present, Locally Active

## A Worldwide Group at your service

Our Global presence ensures that we can support our Customers wherever they are. Supported by teams in over 20 countries, as well as by our accredited Partner Distributor network, we ensure professional, local customer support in over 120 countries, with the added benefit of rapid delivery of goods to meet your needs.

All this backed up and supported by a world-class team of Technical Customer Service, able to provide all the back up or technical support needed. With ISO certificated production sites in Europe, the Americas and Asia, we are close to our customers and fully compliant with all local norms both in terms of our product designs as much as our production facilities.

# How SEKO works for You

From the spark of an idea, through to the delivery of a solution, SEKO is with you all the way

SEKO supports its customers in every phase of a project, from the inception of an idea or request, through design and testing to launch and installation. Our in-house research, design and development teams work closely with the local teams, drawing on customer and market inputs. Then using state-of-the-art technologies to optimize costs and using our own specifically designed test benches to ensure rigorous, robust testing, we ensure a quality solution is delivered quickly to market.

No matter which processes and applications are planned SEKO has a solution in the cleaning and hygiene of kitchens and laundries and surfaces of all types in applications like **Offices and Restaurants, Hospitals and Hotels, Retailers and Schools, Car Washes and Swimming Pools, Cooling Towers, Energy, Food & Beverage, Water & Gas Utilities Potable and Waste Water Treatment.**

## Partnership philosophy

Being a privately-owned business means that we are here for the long term and can plan projects with and for our Customers, where both parties benefit. It means we can rapidly take decisions to invest our resources to ensure our optimum solutions are delivered.

## Your Business, Our Solutions

Our extensive product range represents a unique combination of design, development and implementation know how. With a wide and ever evolving range of products and ancillaries, we can offer specific and comprehensive solutions for a variety of industrial applications. Our solutions are conceived to fit seamlessly into your operation, optimizing the processes and applications.

## Uniquely positioned

SEKO's 3 business units, Cleaning & Hygiene, Water & Industry and Industrial Processes puts us in a unique position to be able to respond to the widest range of business needs, with a broad range that allows you the Customer to deal with just one company, simple.

# Cleaning & Hygiene

## An ever-evolving set of solutions for your environment

SEKO has always supported businesses facing the commercial challenges that arise from having to ensure the cleanest most hygienic premises, whilst driving costs down and minimizing environmental impact. Today, it has built a worldwide reputation as a leader in the world of Cleaning and Hygiene Dosing and Dilution Solutions. Exploiting our market experience, we design, develop, test and manufacture designs that ensure all our solutions and systems deliver:

### Precision and Consistency

Maximizing cost control for chemical dosing, or ensuring the right dilution rate is used, requires advanced technology, impervious to fluctuations in water pressure, to guarantee an effective result, in turn providing the security for a given business brand.

### Safety and Reliability

The safety of customers and operators is paramount, requiring the very best in terms of design and features. SEKO's range provides this security. From the locking mechanisms of our SekureDose range through to the IP65 and Nexa 4 enclosures of our warewash systems, safety is at the forefront of our design ethos. Reliability drives good safety, and all SEKO's products are fully tested prior to leaving our warehouse.

### Ease of Use and Installation

As a global company, we are attuned to the differing needs of individual markets. This is why, when we design a new product, we ensure that installation is simple, that we use uniform programming language solutions that are intuitive and easy to understand, in whatever language you speak.

### Operational Efficiency

Running a business is about making money. To do this, SEKO plays its part. From the affordability of the range of solutions, through to thoughtful design elements like the semi flat pack design of Sekure cabinets to the Transaxle Technology, that improves the lifetime of motors and tubes alike, all aimed at reducing operating costs.





# Kitchen Hygiene

SEKO's Solutions designed with the Kitchen in Mind

Working alongside Global machine and chemical manufacturers and catering operators SEKO has developed a high-quality range of pumps, designed to keep equipment performing brilliantly. From peristaltic pump systems, designed to deliver precise quantities of chemical, to robust and highly efficient dosing systems for enzyme drain cleaning solutions, we can help keep a catering operation running cleanly and smoothly.

## Glasswashers

- Peristaltic dosing pumps

## Door type dishwashers

- Peristaltic dosing pumps
- Double/Triple Dosing systems

## Conveyor dishwashers

- Peristaltic dosing pumps
- Double/Triple Dosing systems

## Timed Control

- Digital or Analog programmer

# WareMini

## Compact detergent and rinse-aid dispensers

It's not everyday that high performance and simplicity in use can be found in a single package that's also very affordable. SEKO's new WareMini range offers digital technology enclosed in a small attractive double pump system, pre-cabled and preset. The perfect recipe for ideal warewash dosing applications. Effortlessly delivering outstanding results, this WareMini range provides the perfect balance between value and benefits.



### WareMini Digital LL

1 detergent pump, 1 rinse-aid pump

#### Features

- Pre-cabled system reduces installation time
- Switchable power supply from 100 - 240 Vac helps reduce inventory stock
- No additional power source required, accepts signals from 100 - 240 Vac
- Water resistant using Nema 4X enclosures gives high degree of protection
- Extended conductivity range 200 $\mu$ S to 10mS with air reading capability to avoid unwanted dosages
- Optimum precision of the set point

#### Digital Models Only

- Easy, fast and preset programming guarantees minimum setup time
- Probe and probe-less mode maximum versatility
- Digital LED display easy to read even in poor light conditions



### WareMini Analog LL

1 detergent pump, 1 rinse-aid pump

#### WareMini Digital LL

Power supply:	Automatic switching 100 - 240 Vac, 50 - 60 Hz
Detergent Flow Rate:	4.7 oz/min at 1.5 psi
Rinse Aid Flow Rate:	0.7 oz/min at 45 psi

#### WareMini Analog LL

Power supply:	Automatic switching 100 - 240 Vac, 50 - 60 Hz
Detergent Flow Rate:	4.7 oz/min at 1.5 psi
Rinse Aid Flow Rate:	0.7 oz/min at 45 psi

#### WareMini Digital DL

Power supply:	Automatic switching 100 - 240 Vac, 50 - 60 Hz
Detergent:	Solenoid valve for powder detergent
Rinse Aid Flow Rate:	0.7 oz/min at 45 psi

#### WareMini Analog DL

Power supply:	Automatic switching 100 - 240 Vac, 50 - 60 Hz
Detergent:	Solenoid valve for powder detergent
Rinse Aid Flow Rate:	0.7 oz/min at 45 psi

# WareBasic

## Peristaltic Pump

SEKO's WareBasic peristaltic range offers reliable robust and affordable dosing solutions for glasswash machines, door type warewash machines. Offering simple installation compact solution and connection, there are models available for both dry and liquid detergents. Safety and reliability is assured thanks to polypropylene enclosures, meeting NEMA 4X classification while ease of use and low operating costs feature across the range.



**WareBasic PR 7**  
Speed adjustable detergent peristaltic pump



**WareBasic PR 1**  
Speed adjustable rinse-Aid or Sanitizer peristaltic pump



**WareBasic PRT6**  
Fixed speed Detergent peristaltic pump with initial and make up charge time, adjustable

## Microprocessor technology

The entire range of WareBasic dispensers utilises microprocessor technology for consistent, precise and reliable control.

## SekoFlex and SekoBril squeeze tubes

SekoFlex and SekoBril squeeze tubes are made to maintain a constant ratio of internal to external diameter along the tube's entire length and trimmers for setting chemical concentration and dosing modes.

### Features

- Precise programming of speed, time and conductivity value with latest generation microprocessor technology
- Long lifetime of squeeze tube and motor due state of the art design and squeeze tube technology
- NEXA 4X (IP 65) enclosure for optimum water resistance. SEKO's material and construction offers excellent resistance to impact and chemical exposure
- Electrical class 2, no ground wire needed



# WareBasic

## Peristaltic Pump



### WareBasic PA 9

Fixed speed detergent peristaltic pump with dosing adjustment by conductivity probe

### WareBasic PA D

Water solenoid valve for powder detergent with dosing adjustment by conductivity probe

### WareBasic PR 7

Power Supply:	Automatic switching 20 - 240 Vac, 50 - 60 Hz
Power Consumption:	3.5 W
Flow Rate:	max 4.1 oz/min
Pressure:	max 1.5 psi
Squeeze Tube:	SekoFlex

### WareBasic PRT6

Power Supply:	Automatic switching 100 - 240 Vac, 50 - 60 Hz
Power Consumption:	3.5 W
Initial Charge time:	18 - 180 sec
Make Up Charge time:	2 - 15 sec
Flow Rate:	max 3.5 oz/min
Pressure:	max 1.5 psi
Squeeze Tube:	SekoFlex

### WareBasic PR 1

Power Supply:	Automatic switching 20 - 240 Vac, 50 - 60 Hz
Power Consumption:	3.5 W
Flow Rate:	max 0.6 oz/min
Pressure:	max 45 psi
Squeeze Tube:	SekoBril

### WareBasic PA 9

Power Supply:	Automatic switching 100 - 240 Vac, 50 - 60 Hz
Power Consumption:	3.5 W
Flow Rate:	max 5.3 oz/min
Pressure:	max 1.5 psi
Squeeze Tube:	SekoFlex

### WareBasic PA D

Power Supply:	Automatic switching 100 - 240 Vac, 50 - 60 Hz
Power Consumption:	7 W

# WareMax EVO

## Double and triple systems

WareMax EVO is a range of dispensers that offers accurate, state of the art, microprocessor controlled dispensing technology all in one. The range offers automatic compact liquid or dry detergent in probe or probe less mode dispensers. Designed specifically for large conveyor and door type warewash machines, it effectively eliminates all manual operations. SEKO's extensive experience in dosing systems ensures that quick and easy installation is a priority.



### WareMax EVO LL

1 detergent pump, 1 rinse-aid pump

- Easy and fast programming with pressure switches and trimmers
- Probe and probe-less mode options drive versatility
- Switchable (multi-voltage) power supply from 100 - 240 Vac
- No other power source required, accepts signals from 100 - 240 Vac
- Water resistant carrying NEMA 4X enclosure for high degree of protection
- Extended conductivity range 200µS to 10mS with air reading capacity
- Temperature compensating probe
- Optional pressure switch kit available
- Optional 24 volt signal kit available.

### WareMax EVO LLL

1 detergent pump, 1 rinse aid pump, 1 sanitizer pump

#### Features

- Precise programming of speed, time and conductivity value with latest generation trimmers and microprocessor technology
- Long lifetime of squeeze tube and motor due state of the art design and squeeze tube technology
- Nema 4 (IP 65) enclosure for optimum water resistance. SEKO's material and construction offers excellent resistance to impact and chemical exposure
- Electrical class 2, no ground wire needed

# WareMax EVO

## Double and triple systems



### WareMax EVO DL

1 solenoid valve for powder detergent, 1 rinse aid pump

### WareMax EVO LL

#### Detergent Pump

Flow rate: max 4.7 oz/min

Pressure: max 1.5 psi

Squeeze tube: SekoFlex

#### Rinse Aid Pump

Flow rate: max 0.7 oz/min

Pressure: max 45 psi

Squeeze tube: SekoBril

Power Supply: Automatic switching  
100 - 240 Vac, 50 - 60 Hz

### WareMax EVO LLL

#### Detergent Pump

Flow rate: max 4.7 oz/min

Pressure: max 1.5 psi

Squeeze tube: SekoFlex

#### Rinse Aid and Sanitizer Pump

Flow rate: max 0.7 oz/min

Pressure: max 45 psi

Squeeze tube: SekoBril

Power Supply: Automatic switching  
100 - 240 Vac, 50 - 60 Hz



### WareMax EVO DLL

1 solenoid valve for powder detergent, 1 rinse-aid pump, 1 sanitizer pump

### WareMax EVO DL

Solenoid valve brass: 24 Vdc

Flow rate: max 4.7 oz/min

#### Rinse Aid Pump

Flow rate: max 0.7 oz/min

Pressure: max 45 psi

Squeeze tube: SekoBril

Power Supply: Automatic switching  
100 - 240 Vac, 50 - 60 Hz

### WareMax EVO DLL

Solenoid valve brass: 24 Vdc

Flow rate: max 4.7 oz/min

#### Rinse Aid and Sanitizer Pump

Flow rate: max 0.7 oz/min

Pressure: max 45 psi

Squeeze tube: SekoBril

Power Supply: Automatic switching  
100 - 240 Vac, 50 - 60 Hz

# Drain Series

## Timed Dosing Systems

SEKO offers the industry's leading drain enzyme dosing system. Known for reliability and durability, the Drain Series systems are used primarily for grease trap maintenance but are suitable for many other applications, where intermittent, timed dosing operations are needed. The Drain Series systems automatically meter exact amounts of chemical anytime of the day or night as desired, minimizing waste.



**Drain Plus**  
Fully programmable



**Drain Battery**  
Compact and easy dosing



**Drain Mini**  
Fully programmable

### Features

- Delivery of a single chemical at predetermined timed intervals
- Up to 48 programmable events per day
- Quick and easy installation
- Low maintenance, robust design
- User friendly programming speeds operations
- Extended battery life

### Drain Plus

Programmable runtime - Minimum period of 1 second

Flow rate: Adjustable 0.07 - 7 oz/min

Timer: Complete digital control

Power Supply: automatic switching  
100 - 240 Vac, 50 - 60 Hz

No. of Feed Times/hrs max: 48 on-times/24 hrs

### Drain Battery

Programmable runtime - Minimum period of 1 minute

Flow rate: 3.5 oz/min

Timer: Digital

Power Supply: 12 Vdc with lantern battery

No. of Feed Times/hrs max: 8 on-times/24 hr

### Drain Mini

Programmable runtime - Minimum period of 1 minute

Flow rate: 4 oz/min

Timer: Complete digital control

Power Supply: Universal 100 - 240Vac

No. of Feed Times/hrs max: 24 on-times/24 hr

# D3000

## All Mode Dosing

The D3000 is an extremely versatile and flexible liquid dispensing system for machine warewashing. It can dose detergent based on conductivity (probe mode), pump run time (timed mode) or speed mode (proportional) both of which are probe less. The D3000 has unique features that provide superior warewashing results with tight control of product usage and is designed to reduce installation and maintenance time.

## Superior results

- Self-learning detergent feed algorithm maintains detergent set point
- PulseDrive conductivity measurement circuit resists effects of probe scaling
- Temperature compensation option
- Initial detergent charge triggered by rinse duration provides good results in probeless mode
- Variable rinse speed and timed options provide spot free dishware
- Low level alarm input option ensures customer promptly replaces empty product containers
- Basic data logging of racks and drains (conductivity mode)

## Ease of installation and maintenance

- Easy set up with Uniview programmer
- Optional potentiometer controls provide flexibility
- Individual product prime switches
- Indicator for power dosing and depletion
- Standard SnapHead pump cartridges

### D3000

Detergent:	0.5 - 5.1 oz/min
Rinse:	0.14 - 0.6 oz/min
Conductivity probe:	K = 0.4
Conductivity range:	660 - 12,800 $\mu$ S at 77°F
Voltage and current:	24 Vac, 1 Amp max
Programming controls:	Uniview or potentiometers
Data logging:	0 - 2,400,000 racks



## Features

- Flexible Configuration
- Ease of Installation
- Simple to Maintain
- Easy to Program
- Optional third pump

# Sierra

## All Mode Dosing with advanced functions

Sierra is a multi-product chemical dispensing system for use in machine warewash applications. The advanced features include rack counting, pump and dishmachine runtime, audible alarms, multiple languages and water resistance. Sierra's patented Virtual Clean Probe™ (VCP) guarantees fewer service calls, better performance and eliminates wasted chemical due to incorrect conductivity readings.



- Comes complete with installation kit, rinse injector and mounting bracket.
- Automatic switching from 100 - 240 Vac protects from damaging power fluctuations
- Installation requires less than 1 hour
- Fast programming thanks to intuitive text menus.
- Can be installed with or without a probe in any door or conveyor warewash system

### Sierra

Power Configurations: 100 - 240 Vac, 50-60 Hz, 0.3 Amp

Pump Tubing: Detergent: Norprene  
Rinse: BiWall  
Sanitizer: Norprene

Detergent Flow Rate: 0.24 - 4.8 oz/min

Rinse Flow Rate: 0.025 - 0.5 oz/min

Sanitizer Flow Rate: 0.01 - 2 oz/min

Wash & Rinse Voltage: 24 - 240 Vac  
30 - 100 Vdc

### Features

- Easy setup using text-based programming menus
- Increased hygiene control - includes alarms for Dirty Washwater, Low Product, Out of Product
- Reduces detergent overuse and probe maintenance with VCP
- Manages profitability and efficiency with datalogging of rack count, pump and warewasher runtime
- Simplified maintenance with patented SnapHead™ pump

# Tahoe

## Time and Speed Dosing

Tahoe is an economical, user-friendly dispensing system for warewash and other chemical dosing applications. It features a rugged, water-resistant enclosure, as well as highly efficient circuitry. The 100 Series SnapHead™ pump cartridge provides excellent tube life, and is easy to remove and replace. Modular design allows several Tahoes to fit together for multi-pump applications and a sliding door hides the adjustments from view.

### Tahoe

Pump:	24 Vdc
Maximum Pressure:	10 psi detergent, 30 psi rinse
Detergent Flow Rate:	3.7 oz/min nominal, not to run more than 15 out of 30 minutes
Rinse Flow Rate:	0.2 oz/min nominal, unlimited continuous run
Input voltage:	200 - 240 Vac, 50 - 60 Hz, 0.1 Amp 100 - 120 Vac, 50 - 60 Hz, 0.2 Amp



### Features

- Easy setup
- Low maintenance
- Speed, time, and initial charge in one SKU
- Modular
- Prime button
- Remote push-button option

# DR-2000

## Timed Chemical Feed System

DR-2000 is ideally suited for applications such as: drains, cooling towers, boilers, spas, pools and fountains.

### Easy to program

- DR-2000's unique 7-day clock can program dosing events that occur one day per week, all weekdays, all weekends or every day
- Program up to 24 events with variable run times from 1 second to 20 minutes
- Tamper-prevention programming
- Simple erase procedure clears unwanted events
- Backup power source

### DR-2000

Power Configurations:	115 - 230 Vac, 50 - 60 Hz 4 D-Cell Battery
Pump:	Peristaltic, self-priming, self-checking 6 volt DC
Speed:	100 rpm
Flow Rate:	5 oz/min



### Features

- Easy setup, programming and maintenance mean you spend less time in the field
- Cost effective, even for small accounts
- Mounting bracket reduces installation time
- Water resistance ensures safety
- Battery pack allows you to install where line power is not available

# Encapsulator

## Dry Detergent Reservoir Sink Filling

The Encapsulator is a simple, reliable method of dispensing dry and solid products into sinks. Unreliable timers and hand pumps are replaced with a simple 1/4 turn valve that fills the sink and doses chemical concurrently. Solution strength is set with an internal adjustment.

### Theory of operation

When the fill valve is turned on, water is sprayed up into the capsule for product washout. Gravity dis-charges the concentrated solution down the primary delivery tube. Bypass water in the secondary delivery tube dilutes the concentrate in the mixing zone. The final solution flows into the sink ready for use. Product concentrations can easily be adjusted by increasing or decreasing the amount of bypass water.

For solid product applications with chemical bottles that have screens on the end, we recommend using an Encapsulator Plus with the 84° nozzle. To handle different product formulations, nozzles are available with different spray patterns and flow rates.

### Features

- Requires less maintenance than eductors or battery-powered systems
- Fast installation with integral vacuum breaker
- Extraordinarily easy to use. Simply turn a knob to fill sink with water and an exact concentration of chemical
- No chemical containers on the floor or under the sink
- No-spill product containers are easier to handle and store than liquid buckets
- Safety shield covers nozzle as soon as product is removed



### Encapsulator

Dimensions:	H 18.5" x W 10.5" x D 8"
Weight:	4.7 lb
Incoming Water Temp:	100 - 130°F
Minimum Pressure:	20 psi
Maximum Pressure:	80 psi
Maximum Flow Rate:	4.5 gpm
Spray Nozzle Options:	at 50 psi



# Encapsulator Plus

## Dry Detergent Reservoir Sink Filling

The Encapsulator Plus dispenses a ready-to-use mix of chemical product and water to pot-and-pan sink or pre-soak applications. It operates from a single manual valve and delivers a consistent product mixture.

### Encapsulator Plus

Dimensions:	H 18.5" x W 10.5" x D 8"
Weight:	4.7 lb
Incoming Water Temp:	100 - 130°F
Minimum Pressure:	20 psi
Maximum Pressure:	80 psi
Maximum Flow Rate:	4.5 gpm
Misting Nozzle:	0.052 gpm at 30 psi
Slow Feed:	0.052 gpm at 30 psi



### Applications

The dispenser is specifically for pot-and-pan sinks (Solid model) or encapsulated powder products (Powder model). Different types of products require different spray nozzle assemblies.

# W-6000

## Dry Detergent Reservoir

W-6000 Solid Master is a rugged, glass-filled polypropylene reservoir for dispensing encapsulated cleaning products. It accepts any typical 6" diameter plastic bottle. The open top design allows the tallest bottles to fit easily, and a strategically located spray nozzle assures total product wash-out.

- Incorporates a spring-loaded spray deflector prevents the operator from being sprayed when changing bottles
- Water spray contacts the contents and dissolves chemical; solution drains from bottom of the bowl

### Features

- Fast installation
- Positive mechanical deflector prevents water spray during bottle changing
- Maximum wash-out for cost effective dispensing
- Durable, glass filled polypropylene construction



### W-6000

Dimensions:	H 9.5" x W 7" x D 9.6"
Weight:	3 lb
Housing:	Glass-filled polypropylene

# Singleshot

## Microprocessor-Controlled Dosing System

Simple, Low-Cost Dosing for Laundry and Warewash applications.

SingleShot is a microprocessor-controlled chemical injection device for accurate, on-demand dosing of applications, including over-the-sink pot and pan and top-load laundry machine dosing.

- Features programmable delay, dose and lockout times of 0 - 20 mins each
- Suitable for top-loading laundry applications
- Programmable dose time allows for timed or volumetric dosing
- Lockout time can be programmed to protect against repeat dosing
- Available in 115 Vac or battery power, comes with low-battery indicator

### DR-2000

Power Configurations:	115 Vac, 50 - 60 Hz 4 D-Cell Battery
Pump:	Peristaltic, self-priming, self-checking 6 volt DC
Speed:	100 rpm - line power 80 rpm - batteries
Flow Rate:	5 oz/min - line power 4 oz/min - batteries



### Features

- Incredibly easy to program
- Can be equipped with an external trigger for remote dosing
- Easily automates top-loading laundry machine dosing
- Programmable lockout prevents accidental repeat dosing
- Water-resistant enclosure





# Laundry

## SEKO Solutions for a Smarter Laundry

Running and supplying on-premise or commercial laundries is a complex business and accurate, reliable dosing management is one aspect that needs to be dependable. SEKO has a range of liquid single and multi-machine units to suit most applications including the provision for remote access and data management of a site operation. SEKO's laundry dosing systems, regardless of the range chosen, offer the most reliable, easy-to-use and resilient models on the market today.

### OPL machines

- Peristaltic dosing pumps
- Double/Triple Dosing systems

### Commercial machines

- Double/Triple Dosing systems
- Multiple dosing systems

### Industrial machines

- Double dosing systems
- Multiple dosing systems

### Tunnel machines

- Dosing systems

### Multi-washer machines

- Centralized peristaltic multiwasher system
- Centralized pneumatic multi-washer system
- Multi-tunnel system with PLC
- Relay systems for tunnel

# OPL Mini L

## Designed for the smallest sites

The OPL Mini series offers a wide range of compact timed systems to dispense one or two chemicals into small and medium capacity laundry machines. Designed and conceived especially for use in smaller operations with washers with a maximum capacity of 45lbs, OPL Mini is a digital peristaltic dosing pump for laundry application that features SEKO's reknown features and benefits of simple installation, robustness and ease of use.



OPL Mini L  
Digital peristaltic pump

Remote Control  
Accessory with 8 ft. cable

### Features

- Precise programming for delay, dosing and lock out times thanks to microprocessor technology
- Motor design and squeeze tube technology provide durability and long life
- NEMA 4X (IP 65) enclosure for optimum water resistance.
- Electrical class 2, no ground wire needed
- Optional push button remote control available

### OPL Mini L

Power Supply:	Automatic switching 100 - 240 Vac, 50 - 60 Hz
Power consumption:	3.5 W
Dosing/Delay Time:	0 - 999 minutes
Dosing Lock-out Time:	0 - 999 minutes
Pressure:	max 1.5 psi
Flow rate:	8 oz/min
Squeeze tube:	SekoFlex

# OPL Basic

## Effective systems for On Premise Laundry

Built to meet the simplest needs of an on-premise laundry, yet featuring SEKO's design know how, OPL Basic is easy to install, straightforward to use and has a low maintenance requirement. All of this in a design that ensures user safety and equipment reliability. The OPL Basic Series offers a wide range of single and/or two product timed systems for liquid and dry product applications. Chemical dosing is activated automatically by a signal from the washer or by manually pressing the membrane switch located on the front of the unit.



### OPL Basic L

Single peristaltic pump dosing system



### OPL Basic LL

Double peristaltic pump dosing system



### OPL Basic D

Single solenoid valve dosing system

## Features

- Dip switches, trimmers and jumpers make calibration and programming quick and easy
- Front cover opens to 90° degrees for easy access to connections
- Prime switches for each product
- Easy Installation - Simply connect the tubing and power supply
- Easily mounted and removed with built in mounting brackets
- No special tools required
- All settings are made inside the cabinet to discourage tampering
- Optional remote manual switch also available

## Dosing time

Accepts program run time 0 - 10 minutes. Easy calibration method of programming.

## Lock out time

Prevents repeat dispensing of product from 0 - 75 minutes with dip switch settings. When the lock out time expires, the pump or solenoid valve will restart, if signalled.

## Delay time

Using an internal trimmer, delay the start of the pump from 0 - 5 minutes. When the OPL Basic receives a signal, dispensing won't begin until after the programmed delay time.

## Alarms

Optional: LED and buzzer signals an empty product warning.

# OPL Basic

Effective systems for On Premise Laundry



## OPL Basic DD

Double solenoid valve dosing system



## OPL Basic DL

Dosing system with a peristaltic pump and solenoid valve

## OPL Basic L

Power supply:	115/208/230 Vac, 50 - 60 Hz
Power consumption:	4.5 W
Max flow rate:	10 oz/min
Squeeze tube:	SekoFlex

## OPL Basic D

Power supply:	115/208/230 Vac, 50 - 60 Hz
Power consumption:	4.5 W
Max flow rate:	-
Solenoid valves:	24 Vdc

## OPL Basic LL

Power supply:	115/208/230 Vac, 50 - 60 Hz
Power consumption:	9 W
Max flow rate:	10 oz/min
Squeeze tube:	SekoFlex

## OPL Basic DD

Power supply:	115/208/230 Vac, 50 - 60 Hz
Power consumption:	9 W
Solenoid valves:	24 Vdc

## OPL Basic DL

Power supply:	115/208/230 Vac, 50 - 60 Hz
Power consumption:	9 W
Max flow rate:	10 oz/min
Squeeze tube:	SekoFlex
Solenoid valves:	24 Vdc

# OPL Advantage

## Multi Washer Systems

OPL Advantage combines SEKO's world leading peristaltic pump technology and guaranteed reliability for accurate dosing in commercial OPL and industrial laundry machines. The OPL Advantage line offers any OPL a perfect solution with a range of dispensers featuring 3 pump sizes with output volumes ranging from 10 - 68 ounces per minute. Innovation allows the system to manage individual dosing formula, assuring high quality performance for up to 9 formulas, each with their own run and delay times.



**OPL Advantage LV**  
Peristaltic dosing systems Low Volume



**OPL Advantage SV**  
Peristaltic dosing systems Standard Volume

### Features

- Accepts optional flush manifold and level control device
- Will satisfy the demands of any OPL application
- Squeeze tubing: SekoFlex and SekoBril. Always equipped with inlet-outlet fittings for fast and safe connections (different tubing types are available for specific chemicals)
- Electrical circuit with 6 pump connections
- Front cover opens to 85° allowing easier electrical connections
- Water resistant and durable
- Easy maintenance, no special tools required

### Control unit

Complete user friendly programming.

- Easy to install
- Up to 9 wash formulas with manual program activation
- Easy Programming
- 3 different dosing possibility normal, drain and relay
- Access code prevents tampering
- Load count function: stats for each formula
- Up to 75 minutes lock out time
- Second activation level
- Pump calibration function



# OPL Advantage

## Multi Washer Systems



**OPL Advantage HV**  
Peristaltic dosing systems High Volume

Control Unit

Signal Interface Module

### Signal Interface Module

- Up to 6 input signals accepted
- Operator safety increased by converting input signal voltage from 20 to 230 Vac to 24 Vdc
- Easy, quick and safe installation with plug 'n' play cable connections

### Wide range of options

- All pumps can be supplied with the option to connect a level probe, an acoustic alarm and a priming switch

### OPL Advantage LV

Flow rate:	10 oz/min for washers < 65 lbs.
Pumps:	3 - 6
6 Input signals:	20 - 230 Vac
Power supply:	Automatic switching 100 - 240 Vac, 50 - 60 Hz
Power consumption:	30 W max

### OPL Advantage SV

Flow rate:	16 oz/min for washers up < 200 lbs
Pumps:	3 - 6
6 Input signals:	20 - 230 Vac
Power supply:	Automatic switching 100 - 240 Vac, 50 - 60 Hz
Power consumption:	100 W max

### OPL Advantage HV

Flow rate:	17 - 68 oz/min for washers > 75 lbs
Pumps:	3 - 6
6 Input signals:	20 - 230 Vac
Power supply:	Automatic switching 100 - 240 Vac, 50 - 60 Hz
Power consumption:	100 W max

# OPL Advantage

## Accessories



### Control Unit Plus

for OPL Advantage

Control Unit Plus provides additional operator benefits, featuring

- 19 Formulas
- Auto formula select



### Flush kit

for OPL Advantage

#### Flush manifold

- Conveniently mounts directly beneath the cabinet
- Injection fittings equipped with built-in check valves. Position is adjustable for ease of tubing installation



### Level control and suction devices

for OPL Advantage

- Optional, externally mounted, empty product alert system available
- Fast and safe connections for foot filter and tubing fittings



### Solenoid valve

- Plastic cabinet and low voltage power supply
- Check valve between solenoid valve and chemical injection area

# Wash Series

## Intelligent laundry dosing at your fingertips

Designed and built on the back of an extensive and in depth understanding of the laundry market, fine tuned in collaboration with customers from around the world, SEKO's Wash Series provides ultimate flexibility for any operator while allowing accurate control of the total laundry operation, helping to manage consumption of chemical, water and energy within the overall wash process with class leading management information available as required. Wash Series offers class leading remote control of the dosing equipment from anywhere in the world, allowing ultimate customer support.

## Remote management of the dosing systems

The Wash Series uses either a pc, tablet or phone to be programmed and works independently from any operating system/ hardware. It works in any web browser on any internet enabled device. No special software is required, and it can be used with a PC or Mac Computer, or any smart communication device.

## Data on Demand

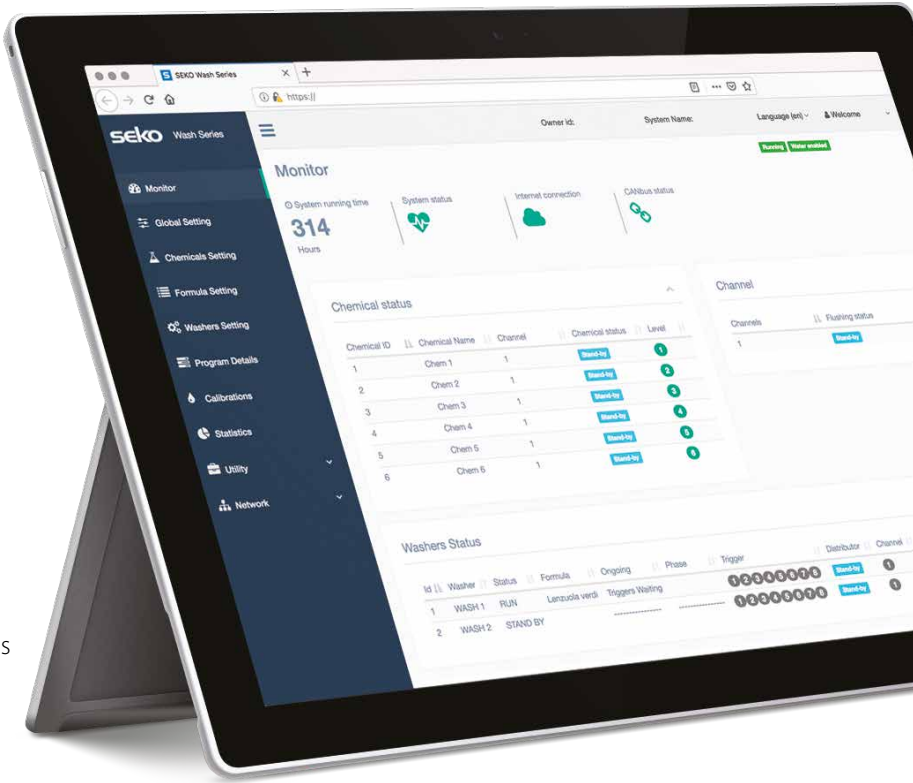
The web connection provides detailed reports providing detailed management information for any operator regardless of their location in the world or the time of day or night. On a purpose-built website, visible on any smart device or PC, operators and managers can access data relating to real time and historic chemical consumption, formula usage, which programs are running on which machine, and whether chemical levels are low or if there is a fault in the system. This on top of information about real time wash loads and total loads washed providing the most important management information for an efficient laundry.



Wifi/Lan for direct connection that enables local programming of equipment



HTML programming interface compatible with all internet browsers for any device as PC, tablet and smart device



# WashMulti Air

## Professional Laundry Dosing System

Aimed directly at operators of the larger industrial laundry operations, WashMulti Air is a pneumatic dosing system designed specifically for this application, offering large flow rate dosing capabilities from a single pneumatic diaphragm pump and multiple valve inlets for distribution in a single or double flushing line. As standard WashMulti Air comes with a "Proof of Dosing" flow meter to ensure accurate dilution control and features an inbuilt self-adjusting calibration. As with the other products in the Wash Series, WashMulti Air allows remote management of the dosing system and provides critical management information through the "sekoweb" portal.

### WiFi box

WashMulti Air WiFi box enables the system to talk to its various components and also enables the remote management of the dosing system via any pc or smart device providing both operational management capability as well as key management information data on demand.



### Features

- Modular system configurable for up to 10 washer extractors, with 16 chemicals and up to 90 formulas
- Parametric dosing of the wash formula based on the washer extractor capacity
- Reliable communication between modules via CANBus
- Wide Range Power Supply 100 - 240 VAC
- Up to 8 inputs for Trigger interface module (SIM) optically insulated 12VDC 24 - 240 VAC
- Turn key system
- Quick uploading and downloading of parameters and formulas

### Flush sequence

WashMulti Air includes a flush sequence both at initial set up and then before and after each chemical dosage ensuring the full chemical dose is delivered to the distributor valve block, but also clearing the tube of chemical residue ensuring non chemical contamination and helping to prolong the life of the squeeze tubes by reducing the chemical contact time to a minimum.

### Double diaphragm pump

Pneumatic double diaphragm pump delivers high flow rate dosages for industrial application it guarantee a reliable supplying with minimum maintenance and reduced dimension

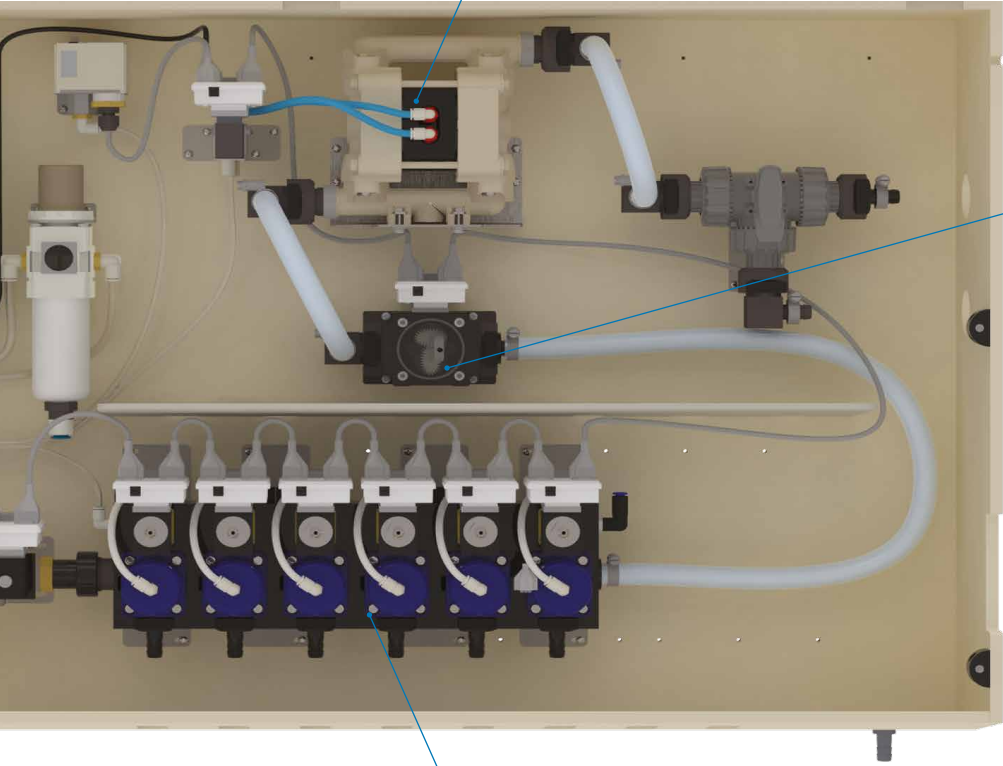
### Gear flow meter

Wash Ultra is standard equipped with a Gear flow meter, a state of the art solution that measures different viscosity products without any error

The gear flowmeter is used to guarantee that every single dosage is measured and delivered to the machine for the maximum reliability and precision

### Pneumatic valves

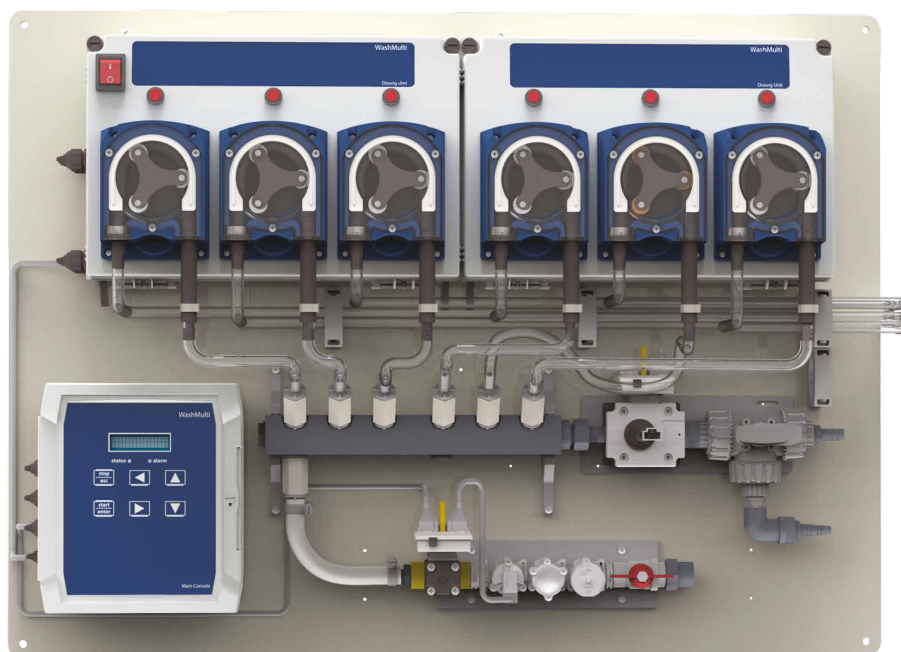
Air driven pneumatic valves are used to draw and delivery chemical. Made to have a great compatibility with all different chemicals these valves guarantee high flowrate capacity and optimum durability all in a modular shape for maximum flexibility



# WashMulti Peri

## Professional Laundry Dosing System

WashMulti Peri was designed for professional laundries requiring the highest levels of dosing accuracy for washer extractors up to 220lb. The peristaltic multi pump features a high capacity "H" pump head allowing a flow rate of up to 55 oz/min. WashMulti Peri also features self-adjusting calibration, making installation and maintenance easy. To further ensure accuracy in dosing, WashMulti Peri as standard comes with a "Proof of Dosing" (PoD) flowmeter which ensures that regardless of tube degradation or flow rate, that the right amount of chemical is dosed reducing wastage and risks of overconsumption.



### Features

- Modular system configurable for up to 10 washer extractors, with 16 chemicals and up to 50 formulas
- Parametric dosing of the wash formula based on the washer extractor capacity
- Reliable communication between modules via CANBus
- Wide Range Power Supply 100 - 240 VAC
- Up to 8 inputs for Trigger interface module (SIM) optically insulated 12VDC 24 - 240 VAC
- Turn key system
- Quick uploading and downloading of parameters and formulas



# WashDose Peri

## Professional Laundry Dosing System

The WashDose Peri system is aimed at on premise laundry operators. Designed to allow OPL Laundry Managers to control accurately their overall operation, helping to reduce over consumption of chemical, water and energy within the overall wash process. It also offers the possibility to control the dosing equipment anywhere in the world allowing remote customer support.

WashDose Peri can be optionally equipped with a PoD (Proof of Dosing) system, that ensures precise and steady dosage quantity, regardless of any variability in the condition of the chemical product or feeder tube.



### Features

- Modular system configurable for up to 16 chemicals and 50 formulas
- Parametric dosing of the wash formula based on the washer extractor capacity
- Reliable communication between modules via CANBus
- Wide range power supply 100 - 240 VAC
- Up to 8 inputs for trigger interface module (SIM) optically insulated 12VDC 24 - 240 VAC
- Turn key system
- Quick uploading and downloading of parameters and formulas



# System with Flexibility

## The only laundry dosing system you'll ever need

A bold statement but such is the flexibility of SEKO's Wash Series that we are confident that our claim is true. SEKO's Wash Series provides ultimate flexibility regardless of the size of professional laundry. Its component based design can be specified to make tailoring to a specific need or site easy.

System configuration on initial set up makes the system completely modular. Each item is connected to the CANbus network and needs to be identified. Once completed, all the items can be replaced without the need for further set up, while the same individual items can be identified and replaced should a fault occur, or maybe additional items are needed to expand the capability of the installation.



### Level Control Module

Monitors the levels of chemical levels in the containers and accepts up to 8 inputs



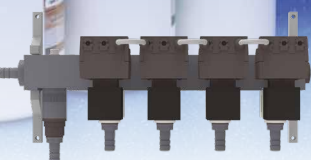
### Alarm Module

Signals the status of the system using visual and audio alarm signals



### Trigger Interface Module

Receives trigger signals from each Washer and transmits them via a CANbus to the system



### Distributor Module

Delivers the dosed chemical directly to each washer extractor using valves that are fully compatible with chemicals commonly found in professional laundry operations



### Washer Kit

Enables the installation to be expanded to cope with additional needs, post original installation



### Washer Formula Selector

Selects the formula for each washer (note this is not required where Autowash mode is present). This helps eradicate the risk of user/operator error as the programs are preselected



# Alpine

## Domestic-Style Laundry Dosing

Alpine is for domestic style top load and frontload washers requiring two or three chemicals. An incredibly cost-effective method to automate domestic style laundry dosing. Its low acquisition cost and fast, easy installation makes it an easy option. Alpine’s application flexibility lets you tailor the installation to your requirements.



- Fits manual triggering, remote triggering and automatic triggering applications
- Alpine stores 8 formulas and accepts a 3rd pump
- Low-product alarm eliminates poor laundry results due to empty chemical drums

Smaller operations require less maintenance heavy systems, and Beta Technology’s Alpine fits perfectly, with simple operation and great reliability, while the SnapHead™ pump cartridges simplify tube maintenance, preventing chemical burns

**Features**

- Affordable domestic style laundry dosing
- Minimal inventory requirements
- Low maintenance
- Quick, easy installation

### Alpine

Power Configurations:	100 - 240 Vac, 50 - 60 Hz
Tube:	Flex, 8 oz/min
Current:	0.42 Amp max (at 240 Vac)
Hydraulic Performance	
Maximum Vacuum:	8" of mercury
Maximum Pressure:	20 psi

# L5000Plus

## Time, Formula, Sequence, Relay & Tunnel Dosing

L5000Plus is Beta's latest innovation in OPL dosing technology. It offers Beta traditional reliability and ease of use but with more versatility. L5000Plus flexibility makes it easy to set up with any washer. It will run up to 3 pumps simultaneously, and each pump can have an independent delay time.

Beta's patented Sequence Mode is great for washers with few or even no signals, and can drive 16 formulas with one trigger. Automatic Formula Selection (AFS) allows you to configure your dispenser to automatically select formulas based on specific trigger timing criteria from the washer. L5000Plus's Dose Verification feature provides an easy "reality check" on the system's calibration.



- Programmer- less Relay Mode and single Formula Mode means a single programmer can be used for several installations
- Allows for up to 8 pumps
- Pump speed control increases tube life with viscous products, reducing service costs
- Programmer can be used to store and copy formulas and formula names for several dispensers
- Computer data interface PCB works with reporting software
- New, more detailed documentation on-line allows for easier installations.
- Automatic Formula Selection (AFS) that makes formula selection more accurate and helps reduce overall equipment costs.
- Dose verification to reduce servicing costs

### Features

- New sloped design
- New Trigger Module that can be mounted outside of pump box
- Visible LED on Trigger Module to enhance washer troubleshooting
- TAFS Mode available for tunnel applications
- Automatic Formula Selection (AFS)
- Dose verification

### L5000Plus

Power Configurations: 100 - 240 Vac, 50 - 60 Hz

Nominal Flowrate: 16.9 oz/min

# L5000XL

## Time, Formula, Sequence, Relay & Tunnel Dosing

L5000XL doses large washer extractors and CBW tunnels cost effectively. Can combine up to 8 large or medium pumps and run them simultaneously. Can operate also in programmer-less Smart Relay Mode, and retrofit data logging.

Simplified installation and low maintenance requirements help reduce operating costs. XL features simple volumetric programming, copy and clone functions, easy calibration, Automatic Formula Selection (AFS) and dose verification.

### Easy to program, easy to calibrate, fewer trouble calls

- L5000XL has 6 dosing modes: Smart Relay, Formula, Sequence, Latched and TAFS. Automatic Formula Selection (AFS) is available in Latched mode.
- In Continuous Batch Washer applications, all 8 pumps can run simultaneously.
- If remote formula selection is not required, the programmer can be removed after installation is complete.

### Clone formulas for quicker installations

L5000XL's cloning ability eliminates repetitive data entry. Storing a master program on a separate programmer, ensures rapid future installations.

### Special Features

- Load counts of the 16 formulas are stored, as are alarm counts.
- Trigger diagnostics means you can simultaneously walk around the washer checking wiring while viewing trigger and pump status.
- Counts pump runtime in minutes means product usage calculations and tube life can be tracked.
- XL's alphanumeric formula names eliminate risk of incorrect and costly formula selection simplifying laundry operations and ensuring consistent results.



### Features

- Reduces installation and training time
- Reduces maintenance
- PC-software compatibility
- Simplifies formula reconfiguration when replacing other dispensers
- Formula Selector/Programmer features a 16-character alphanumeric LCD display that supports English, Portuguese, French-Canadian, Finnish, Turkish, French, Japanese, German, and Spanish.

### L5000XL

Power Configurations: 100 - 240 Vac, 50 - 60 Hz

Nominal Flowrate: 20 - 68 oz/min

# L5000XL

## Time, Formula, Sequence, Relay & Tunnel Dosing

Easy to program. Easy to calibrate. Fewer trouble calls.

SmartScreens™ lead you through the programming so quickly, a first time user can program formulas in under 10 minutes.

L5000 XL has 6 dosing modes: Smart Relay, Formula, Sequence, Latched and TAFS. Automatic Formula Selection (AFS) is available in Latched mode. These modes make it tremendously flexible, so the L5000 XL can be installed anywhere. In Continuous Batch Washer applications, all 8 pumps can run simultaneously. If remote formula selection is not required, the programmer can be removed after installation is complete.

### Clone formulas for quicker installations

L5000 XL's cloning ability eliminates repetitive data entry. Simply unplug the programmer from a programmed pump box, plug it into an unprogrammed pump box and select "Send." It's easy to edit the downloaded programming. By storing a master program on a separate programmer, all of your installations will be quicker!

### Laundries will love you for this

XL allows users to select formulas by name instead of number, so you can throw away those wall charts! Optional low level alarms reduce rewashes. Hygiene verification can be used to verify that wash water temperature meets local regulations. Best of all, operators can either view load counts and pump run times on the programmer, or retrofit a datalogging and communications module that can be combined with ManageNet software to provide full operational reporting.

### Easy to calibrate

Our programmer is an ergonomic wonder, fitting in your hand like a TV remote for quick calibrations. You'll never have to calculate a run time again! The calibration is volumetric, so formulas never need to be changed on the washer or in the dispenser to make adjustments for tube wear. Simply recalibrate each pump, and the run times are automatically adjusted! L5000 XL also features dose verification, allowing you to "reality check" pump volumes and recalibrate if necessary.



Ergonomic design makes calibration easy!



A close-up photograph of a person's hand holding a folded blue microfiber cloth. The background is blurred, showing what appears to be a window or a wall with a textured pattern. The lighting is bright and natural, suggesting an indoor setting with a window.

# Surface Cleaning

## SEKO's Solutions for Surface Cleaning and Disinfection

SEKO offers the widest range of chemical dilution and dispensing stations, surface cleaning, foaming systems and automated dosing management solutions, suitable across a multitude of applications. Our low pressure systems are especially effective, providing long contact time ensuring an effective, deeper clean. Our ranges offer the trademark SEKO attention to detail for precision, safety, reliability, ease of use and affordability.

### Dilution

- Hand pump
- Dilution system

### Cleaning and disinfection

- Spraying system

### Foaming

- Foaming system

### Spraying

- Automotive spraying system

### Refill

- Chemical dispensing system

# ProMax

## Accurate dilution at the push of a button

ProMax features the latest in proportioning technology, reducing flow restriction and maximizing performance even in lower water pressure situations.

It is the latest, most intuitive and cost effective dispensing system available in the market today.

By combining the revolutionary technology of patented hydrodynamics and user friendly, image enhancing features unique to ProMax, SEKO has produced the perfect solution for all institutional and light industrial chemical dilution applications.



ProMax  
Button 1 Product

ProMax  
Button 4 Product

## ProMax - Certifications



ProMax combines state of the art patented technology with innovative user friendly features

- Modularity for maximum versatility
- Space saving design
- Quick, easy, tool free installation
- Pick up and discharge tubing included for fast easy connection to inlet and outlet fittings

Models available to safely and efficiently fill small, medium and large containers with accurately diluted use solutions from chemical concentrates

- Spray Bottle (flow rate 1 gpm)
- Mop Bucket (flow rate 3.5 gpm)
- Floor Scrubber (flow rate 8 gpm)

## Easy to operate

- ProMax allows additional units to be easily added to an existing installation
- Wall bracket mounting eliminates need to open enclosure during installation for tool free mounting
- Accurate dilution rates; select from a full range of supplied metering tips

## Reliability

Robust materials and construction for maximum reliability:

- Magnetic solenoid type activating valve
- Tamper proof housing and activation mechanism
- 4 product selector valve uses a mechanical seal, elastomer free technology for full chemical compatibility
- Auto-activating venturi requires no downstream restriction to create back pressure
- Backflow prevention offers effective protection while minimizing flow restriction

# ProMax

## Accurate Dilution at the Push of a Button

### Low maintenance

Reduced service calls

- Robust housing and valve activating mechanism
- Robust hydraulic with 9 bar (130 psi) static pressure tolerance
- Auto-locking connection
- Auto-activating venturi
- Optional cartridge filter for poor water conditions to reduce water related service calls

### Project your company image

- 95% of the facing available for proprietary graphics using underlays and removable clear faceplates
- No external stick on labels to peel or run from wear or unsightly chemical and water damage
- Customize the facing to identify product and/or establish color coding for employee safety
- Print out small quantities of labels as needed to match your customers' product mix



ProMax  
Slide 4 Product & Button 1 Product

### Pro Max Flex Gap

Pressure:	15 - 130psi
Grey venturi	
Flow rate:	1 gpm
Dilution ratio:	2.7:1 - 556:1
Yellow venturi	
Flow rate:	3.5 gpm
Dilution ratio:	4.9:1 - 1000:1
Blue venturi	
Flow rate:	8 gpm
Dilution ratio:	24.2:1 - 2000:1

### Pro Max Air Gap

Pressure:	15 - 130psi
Grey venturi	
Flow rate:	1 gpm
Dilution ratio:	3.13:1 - 417:1
Yellow venturi	
Flow rate:	4 gpm
Dilution ratio:	7.80:1 - 1429:1

## Features

- Available in either 1 or 4 product versions
- Revolutionary patented hydrodynamic technology sets new industry standards of performance and reliability
- Modular and flexible for maximum versatility for Kitchens to Laundry, Janitorial services to Commercial Cleaning
- Efficiently fills small, medium and large containers with accurately diluted ready to use solutions from chemical concentrates
- Outstanding space for personalized branding or customized communication without costly printing minimums and set up charges
- ProMax C certified by all the leading European water authorities
- Flow rate 4 – 30 l/min



# ProMax

## Features

**Robust and durable  
PP enclosure**

**Auto-locking connection**

**Cartridge Filter**

The optional head filter, enhances filtration where needed in troublesome water conditions reducing service calls.

**Tamper proof  
housing and activating  
mechanism**

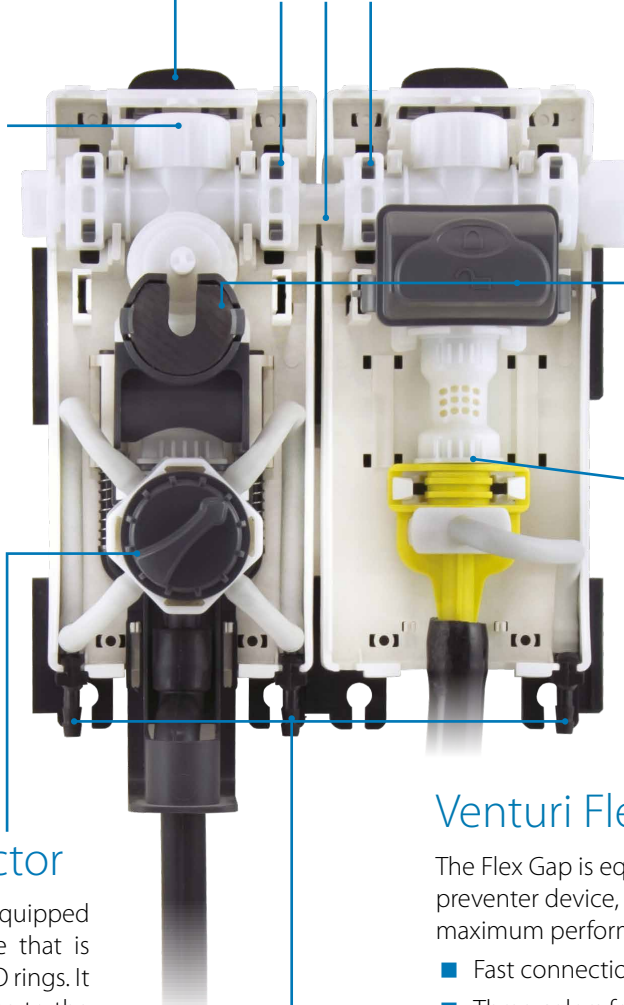


**Magnetic solenoid type  
activating valve**

The large membrane activation ensures perfect operation, up to 9 bar pressure and 158°F



The filtration is independent of the number of units in line.



**4 product selector**

The 4 product ProMax is equipped with a new selector valve that is elastomer free and has no O rings. It offers the highest resistance to the widest range of chemicals.

## Venturi Flex Gap Version

The Flex Gap is equipped with a patented backflow preventer device, minimizing restriction and ensuring maximum performance.

- Fast connections
- Three colors for three different flow rates:
  - Grey Low
  - Yellow Medium
  - Blue High
- Same size discharge hose for all models
- Single product units can be easily converted to a 4 product model in the field
- Fully interchangeable parts
- Tool free maintenance

**External tip seat**

The product suction fittings are located outside, where the tips are also inserted.

- Accurate dilution rates
- Select from a full range of supplied metering tips

## Also available in AIR GAP version

- Two colors for two flow rates
  - Grey Low
  - Yellow Medium



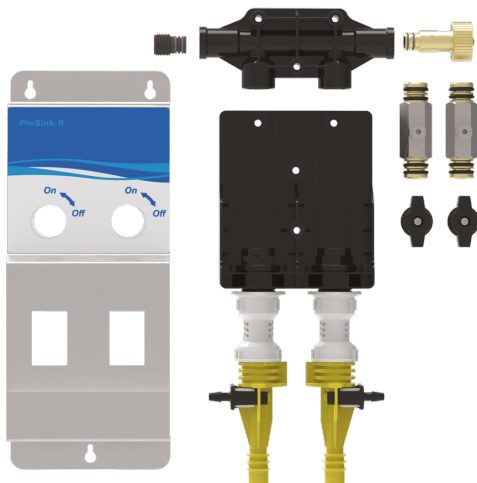
# ProSink-R

## Accurate dilutions straight to your sink

ProSink is a chemical dispensing system that automatically and consistently mixes the precise amount of detergent and sanitizer with water at the turn of a knob, conveniently filling large sinks with accurate solution.

The ProSink-R features a strong, long lasting and easy to clean rugged stainless steel enclosure that is smooth with no sharp edges and which has the benefit of a customisable front cover. With a direct connection to the water source and no electric power or compressed air needed, it produces accurately diluted chemical simply and quickly with a fill tube.

Offering single or double chemical product options and with a variable flow rate, operators can choose from 15 mixing ratios for accurate, effective dosing. Naturally ProSink comes equipped with an ASSE 1055 certified backflow prevention device UPC and CSA standards



## Easy Access

Removing the valve knobs it is possible to open the system and access the hydraulic circuit, carry out maintenance and change water inlet direction.

### ProSink-R Flex Gap

Pressure:	15 - 130 psi
Gray Venturi	
Flow rate:	1 gpm
Dilution Ratio:	2.9:1 - 1000:1
Yellow Venturi	
Flow rate:	3.5 gpm
Dilution Ratio:	5.5:1 - 2000:1

## Features

- Ball valve operation
- No need to hold or lock a button
- Smooth and ergonomic surface and customizable front cover
- Rugged stainless steel enclosure
- Strong, long lasting and easy to clean
- Installs easily with 2 or 3 screws
- "Quick connect" manifold to insure fast easy maintenance
- Direct connection to water supply
- Integrated backflow prevention

### ProSink-R Air Gap

Pressure:	15 - 130 psi
Gray Venturi	
Flow rate:	1 gpm
Dilution Ratio:	3.27:1 - 667:1
Yellow Venturi	
Flow rate:	4 gpm
Dilution Ratio:	7.56:1 - 1667:1

# ProFaucet

## Makes your tap count

ProFaucet is an inexpensive and highly reliable proportioning device. With minimum investment the ProFaucet provides excellent chemical consumption and cost control.

ProFaucet is extremely safe and ensures that no more manual mixing is required to eliminate unnecessary direct contact with concentrated chemicals. By eliminating manual dosing, the ProFaucet reduces the possibility of over use of chemical and excessive use cost.

ProFaucet's full brass nickel plated body is made for reliability and long life. Consistent performance makes it suitable for most any pot & pan application.



## Simple to use

With the water on, push the button and release it. The system mixes the chemical into the flow in the desired ratio. When water is turned off the button automatically releases to provide fresh water when the faucet is reactivated.

Compact and easy to install:

- Remove the faucet aerator
- Screw the ProFaucet onto the threaded outlet
- Connect the chemical

ProFaucet's full stainless steel body is made to withstand heavy use and chemical aggression for reliability and long life. The modern design provides an enhanced image. Consistent performance makes it suitable for most any pot & pan application.

## ProFaucet

Flow rate:	2.7 gpm
Dilution Ratio:	6.5:1 - 1125:1
Pressure:	3 - 100psi

## Features

- With minimum investment the ProFaucet provides excellent chemical consumption and cost control.
- No more manual mixing to eliminate unnecessary direct contact with concentrated chemicals.
- By eliminated manual dosing, the ProFaucet reduces the possibility of over use of chemical and excessive use cost
- Quality, Stainless steel body
- Chemical & impact resistant
- Updated, modern design
- Easy to install and to use
- Accurate, reliable
- Durable, convenient

# ProSpray

## Spray system at the flick of a switch

The ProSpray cleaning and sanitation system automatically dilutes and dispenses concentrated cleaning products as a foam or spray. The spray system is easily and quickly converted into a foam system with the “quick-coupling” foam wand.

- Strong, long lasting and easy to clean rugged stainless steel enclosure
- Smooth and ergonomic surface, with no sharp edges
- Connection direct to the water source, no electric power or compressed air needed
- Space saving
- Quick and easy installation: no special tools required
- The system can dose one or two products
- Single or multiple chemical use
- 15 different mixing ratios can be easily chosen, making the dosing accurate and effective
- Fill tube designed to minimize excess foam



### ProSpray

Flow rate:	3 gpm
Dilution ratio:	15.4:1 - 2000:1
Pressure:	22 - 100psi

### Features

- No “Lock-Tite” threaded connections
- Simple maintenance thanks to “quick connect” manifold
- Non return valve and metering tips are easily accessible
- Brass fittings for hot water resistance, polypropylene injectors for chemical resistance, rugged stainlesssteel casing for secure mounting and durability.
- Suitable for use in food processing, dairy, transportation, industrial and agricultural industries.
- It can also be used: in supermarket meat rooms, seafood shops, butcher shops, automotive care areas, shower rooms

# ProTwin

## Two in One Foaming Solution

ProTwin is a cleaning and sanitizing station that automatically mixes and dispenses concentrated chemicals. With a clean, professional appearance it comes with a built-in hose storage. A detachable foam wand extends usage options.

SEKO's ProTwin system is ideal for large food preparation areas and are suitable for the retail, institutional and healthcare markets. Featuring an ergonomic design that is HACCP compliant ProTwin automatically mixes and dispenses concentrated chemicals through its spray gun which features an adjustable spray pattern delivering high levels of wet foam.

Its central dial selector makes switching between Rinse & Sanitize functions easy even with wet gloves. The ProTwin optional foam kit provides unsurpassed dry foam performance, making cleaning high level vertical or difficult surfaces easy.



### Features

- Adjustable spray pattern
- Separate selectable chemical position eliminate risk of chemical crossover
- Unsurpassed foam quality when equipped with foam wand
- Engineered eductors ensure accurate, proportionate dosing, easy to clean and be replaced
- Intuitive ergonomic design for user friendly operation
- 3 functions spray/foam and rinse up to 122°F tolerance

### ProTwin

Pressure:	22 - 85psi
Black Venturi	
Flow rate:	2.5 gpm
Dilution ratio:	5.3:1 - 551:1

## Adjustable spray pattern & thick foam all in one

Without Foam wand



Without Foam wand



Light – durable spray gun

With Foam wand



# ProTwin Foam Kit

## Two in One Foaming Solution

ProTwin foam kit

- Utilizes the ProTwin's single selector for detergent and sanitizing functions
- Generates surface clinging dry foam for maximum contact time
- ProTwin's venturi maintain a proper and consistent chemical action/consumption
- Excellent for vertical surface cleaning
- Enhances the properties of foaming chemicals with the use of compressed air



With ProTwin Foam Kit



### ProTwin Foam Kit

Pressure: 22 - 85psi

Green venturi

Flow rate: 1 gpm

Dilution Ratio: 5:1 - 64:1

Yellow venturi

Flow rate: 1.3 gpm

Dilution Ratio: 10.3:1 - 93:1

# JetNeat

## Portable dilution in your hand

The JetNeat system, the fastest, easiest, most convenient and suitable solution to wash, sanitize and rinse surfaces.

JetNeat is composed from a spray gun with a quick connector and a venturi with a chemical tank built-in which can be applied at the exit of it.

Connected to the water tap by a flexible hose, the trigger gun is able to rinse thanks to a fresh water powerful jet.

Once the venturi is quick applied at the outlet of the gun, the JetNeat can produce a mixing solution that can be sprayed or foamed based on the model and chemical used.

## Fits the need

JetNeat is a suitable solution for a variety of applications, and by combining the various elements, an ideal solution can always be found.

- Wet room
- Shower facility
- Kitchen
- Butcher shop
- Restaurants
- Supermarkets
- Health care
- Educational facilities
- Animal care

## JetNeat

Dilution ratio: 1.10:1 - 250:1

Pressure: 25 - 83psi



JetNeat  
0.7 Gallon



JetNeat  
0.4 Gallon

## Features

- Chemical tank made in PP for chemical and physical damage resistance
- Light weight gun easy to use with brass nickel plated connector
- Strong PP body with built in venturi and brass nickel plated connection

# SekureMax

## Simple and safe chemical storage

SekureMax is an evolutionary chemical cabinet incorporating many innovative features designed to assist management of transport and storage costs. SekureMax has been designed to offer the best compromise between accessibility and total footprint whilst remaining easy to clean. Designed to be used with SEKO's ProMax system, SekureMax can provide a neat solution for chemical storage for any of SEKO's dilution dispensing systems.

SekureMax is flexible enough to hold multiple sizes of chemical container covering 1 gallon or 0.5 gallon jug. SekureMax comes with the facility to lock the cabinet door using a revolving plug or plastic key, guaranteeing the appropriate level of security.

SekureMax features a highly customizable front panel that allows for multiple messages to be displayed according to need - from training and health and safety to brand messages or customer communications, without the need for expensive mould designs.



### SekureMax 5l

Dimensions: H 14.3" x W 8.9" x D 6.9"



### SekureMax 2.5l

Dimensions: H 9.5" x W 6.8" x D 4.8"

## Features

- Semi flat pack, folding design helps drive cost savings during shipment and reduces space required for stock holding
- Robust ABS lockable cabinet incorporates the dispenser and provides space for variable sizes of chemical container
- Customizable front panel cover to assist in promoting safe communication of the chemical content or for Customer Brand promotion
- The mounting bracket system provides superior modularity and compatibility with the ProMax and SekureDose ranges as well as ease of installation
- Smart design that remains easy to clean
- Lockable with revolving plug or universal plastic key





# SekureMax

Simple and safe chemical dosing

Foldable

Enjoy the advantage of reduced shipping costs and reduce stock space



Modularity

Ultimate flexibility and modularity of the system allows exact site specific installation for maximum efficiency



Custom solutions

Promote your own or customer's brand or use the custom options to focus on health and safety and correct product usage. Clean, simple design ensures SekureMax can always be kept clean providing the right image.



# SekureDose

## Simple and safe chemical dosing

SekureDose is the ideal “turn-key” solution for filling spray bottles or buckets to wash floors, counter tops or other hard washable surfaces and for sink filling for pot and pan washing. SekureDose is quick to install and comes with an easy to maintain manual pump mechanism built into a robust, easy to clean chemical cabinet.

As with all SEKO equipment, it offers practically tool free installation – quick and simple using the SEKO wall bracket system. As with the SekureMax and ProMax systems, SekureDose offers outstanding space for personalized branding or customisations communication without costly printing minimums and set up charges.



### SekureDose 5l

Dimensions:	H 21.3" x W 8.9" x D 6.9"
Trigger Bottle:	H 32.6"
Mop Bucket:	H 12.5" x D 10.1"

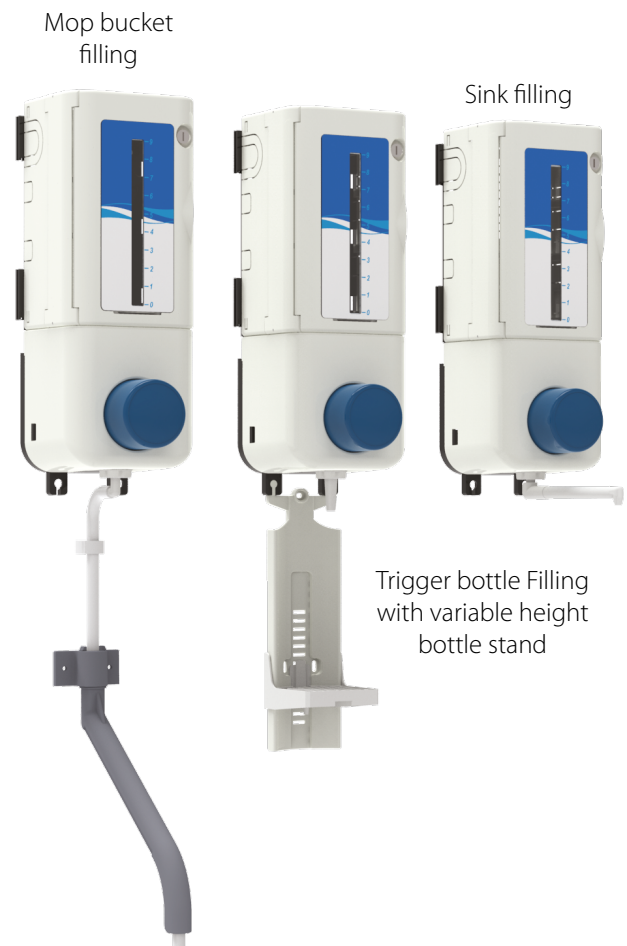
### SekureDose 2.5l

Dimensions:	H 18" x W 6.8" x D 5.5"
Trigger Bottle:	H 29.3"
Mop Bucket:	H 12.5" x D 10.1"

## Three model types

Providing solutions for bucket fill, trigger bottle fill and sink filling.

- Easy calibration
- No electrical connection, no water supply required
- Modular flexibility
- Capacity 1 gallon and 0.5 gallon



# SekureDose

## Simple and safe chemical dosing

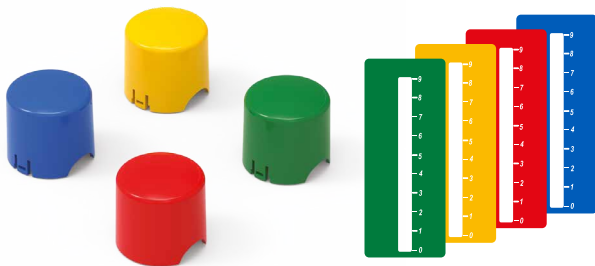
### Easy installation

Just fix to the wall, insert the chemical container and start to use.



### Custom solutions

- Possibility to lock the cabinet either with a revolving plug or with a plastic key
- Wide customization capacity: coloured caps and custom labels to make SekureDose even easier and intuitive for the end user



### Easy modular tube stiffener

Ensures the feed tube pulls from the bottom of the chemical container minimising waste and delivery issues.

### Improved check valves

- Easy maintenance: unscrew the locknut, remove the fitting, replace the valve
- Double O-ring seals
- Valves are the same for top and bottom side

### Features

- Turn-key solution
- Lock out mechanism to avoid over consumption
- Tool free installation and maintenance
- Robust ABS lockable cabinet includes the dispenser and variable sizes of chemical packaging
- System can be extended using additional units for multiple product dosing
- Flexible shockproof spout
- Variable stroke rates available through pin selection
- No contact between the spring and chemical. Available as standard with EPDM seal: optionally available with FPM or Silicone.
- Three versions available: sink, bucket and bottle filling – with variable height bottle tray.

### Fast stroke regulation

The large cap provides easy access to the stroke regulating pins whilst remaining secure during use

### 6 different dosage settings

ranging from 1/5 - 1oz per stroke



# ProDose-R

## Easy and affordable control and dosing accuracy

Designed specifically to dose an exact amount of concentrated chemical to be diluted with water, for sink manual warewashing, janitorial and commercial application, ProDose R assures accurate dosing at each push of the large dispensing button. Each push yields the same volume output every time. ProDose R offers fast and easy installation that doesn't require a drill, when replacing existing pumps, as the hole patterns on the smart bracket match most existing models.

ProDose-R features enhancements including a flexible spout, larger diameter fittings for highly viscous liquids and an improved stroke regulation. Its colour coded cap can be easily removed to allow access to the dosage setting mechanism.

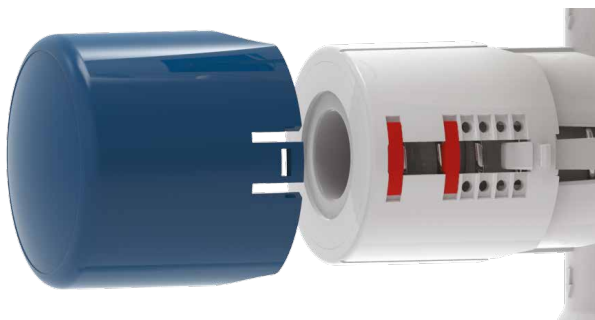
ProDose-R offers up to 6 different dosage settings

### Improved fast stroke regulation

The cap is improved providing ready access to the red adjusting pins while remaining secured during use.

### 6 different dosage settings

- Ranging from 1/5 - 1oz per stroke
- No need to open the pump to set dosage



### ProDose-R

Overall Dimensions: H 9" x W 7.25" x D 5.5"

Hose: 0.4" ID - 0.6" OD



## Features

- Larger diameter fittings and 3/8" ID tubing improves performance with high viscosity products (>4000Cps)
- Strong, flexible, impact resistant discharge tube
- Made from durable Polypropylene for chemical compatibility to resist breakage
- Fits common standard fittings
- Easy maintenance: unscrew the locknut, remove the fitting, replace the valve
- Double O-Ring Seals. Available in EPDM, FPM or Silicone models to meet various chemical applications
- Valves are the same for left and right
- Easy modular tube stiffeners ensure full evacuation of chemical drums

# BetaJet

## Venturi-Based Proportioning System

BetaJet's patented design makes offers reliability and convenience unlike any other proportioning system. Installation is easy and reduces the need for unscheduled maintenance caused by the clogging of old-fashioned metering tip and are also reduced by BetaJet's ultrafine filtration water strainer.

BetaJet also reduces inventory requirements with a simple reconfiguration. Switching from bottle fill to bucket fill is fast and additional units can quickly fix together without tools or threaded fittings.

### Features

- Attractive design
- Easy installation
- Reduced trouble calls
- Simple maintenance
- Increased safety

### Reducing costs

- Fast dilution adjustments with patented metering peg
- "Tool Free" assembly
- Threadless, quick connectors for multiple product systems
- Fast and easy disassembly and reassembly for routine maintenance
- Unit can be customized in the field

### Innovation drives satisfaction

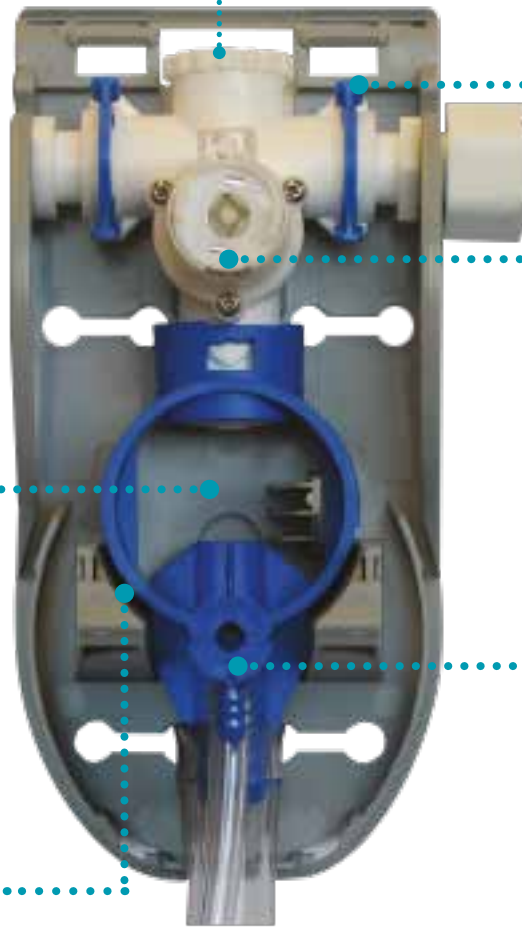
- Patented clog-resistant metering peg is easier to handle and harder to lose
- Ultra-fine mesh strainer that protects nozzle from splash-inducing debris
- Flow-through strainer reduces clogging
- R-Gap provides extreme reliability, even with extremely hard water
- A-Gap nozzle features patented lip that reduces scale-induced backpressure splashing
- Patented laminar-flow eductor body reduces splashing
- Easy "Push-on, Push-off" latching



# BetaJet

## Venturi-Based Proportioning System

Clog resistant, flow-through strainer. Water flows around it on multiple unit systems, so even if the first one clogs those down-stream aren't effected.



E-Z on "Blue Clip" simplifies water connections

Valve is easily changed from latching to non-latching; just twist the disc

A-Gap and R-Gap are ANSI/ASSE 1055B and UPC approved for backflow protection

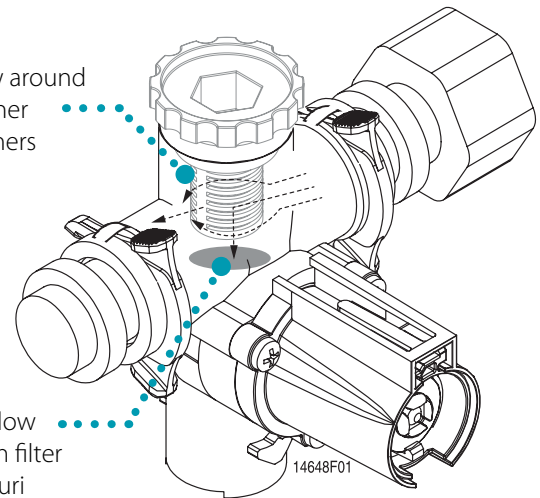
Adjust dilution without removing chemical tube

Value/Venturi assembly snaps into backplate

### BetaJet

Dilution Range:	Low Flow: 3:1 - 525:1 High Flow: 5:1 - 800:1
Ext. Dilution Range:	Low Flow: max 800:1 High Flow: max 1200:1
Pressure A-Gap:	Low Flow: 14 - 78 psi
Pressure A-Gap:	High Flow: 14 - 78 psi
Pressure R-Gap:	All: 28 - 78 psi
Dimensions:	H 8" x W 3.9" x D 3.75"
Nominal Fill Rate:	Low Flow: 1 gpm at 40 psi High Flow: 3 gpm at 40 psi

Water flow around filter to other proportioners



Water flow through filter to venturi





**Beta**  
TECHNOLOGY

## Specialty

A Beta System for Every Customer

Beta Technology is world known for its design and know how in the dosing and dispensing for janitorial, catering and laundry sectors, but they have also taken this know-how into areas that are more diverse.

### Applications

- Swimming Pools
- Spa



# Pool Shot

## Recycle-Timer or Controller-Activated Pump

PoolShot is a microprocessor-controlled, repeating event chemical injection pump for accurate dosing in a variety of applications involving large bodies of water such as pools, spas, fountains and ponds.

PoolShot features:

- Programmable delay, dose and lockout times.
- Delay and dose time ranges: 1 sec to 19m 59s
- Lockout and delay times combined: 1 sec to 39m 58s.

PoolShot can be triggered from an external controller, power connections (115 to 230 Vac ), a contact closure or from an external voltage signal from 24 to 240 Vac to Vdc using an optocoupler.

PoolShot can handle chlorination for pools up to 100,000 gallons. For larger pools or load issues use either one or two PoolShots to establish a baseline of regular chemical addition, adding a Pool-2000 to inject booster doses during times of high bather load or sunshine.



### Features

- Buttons and liquid crystal display allow quick digital programming
- Water and sunshine-resistant enclosure
- Standard tube out-performs competitor's tubes and handles all pool chemicals: chlorine, acid, algaecide, clarifiers, etc.
- Repeat cycles
- Programming with a 10-minute runtime and a 1-second delay allows this dispenser to be used as a "slave" pump to an ORP pH controller

### PoolShot

Power Configurations:	115 Vac, 50 - 60 Hz
Pump:	Peristaltic, self-priming, self-checking 6 volt DC
Flow Rate:	14 gpd
Pressure:	30 psi

# Pool 2000

## Programmable, Automatic Weekly Clock-Based Pump

Pool 2000 is a microprocessor-controlled, clock-based chemical injection pump for accurate dosing in a variety of applications involving large bodies of water such as pools, spas, fountains and ponds.

Pool-2000 has a real-time clock, and keeps track of which day of the week it is, so it can dose daily during certain times of the day, and is programmable for independent dates/times. [i.e. 7 day clock, 1 event per hour and all events can be different, absent or programmed to be the same].

Pool 2000 also features:

- Easy-to-read liquid crystal display screen and buttons
- Programmable run time 1 sec to 19m 59s each hour.
- Memory-backup battery
- Rugged water and UV-resistant enclosure for external mounting.

Pool Shot doses on a recycle timer, turning on and off in a continuous cycle to establish a baseline of regular chemical addition. Pool 2000 can be used to inject booster amounts during times of higher bather load or sunshine.



### Pool 2000

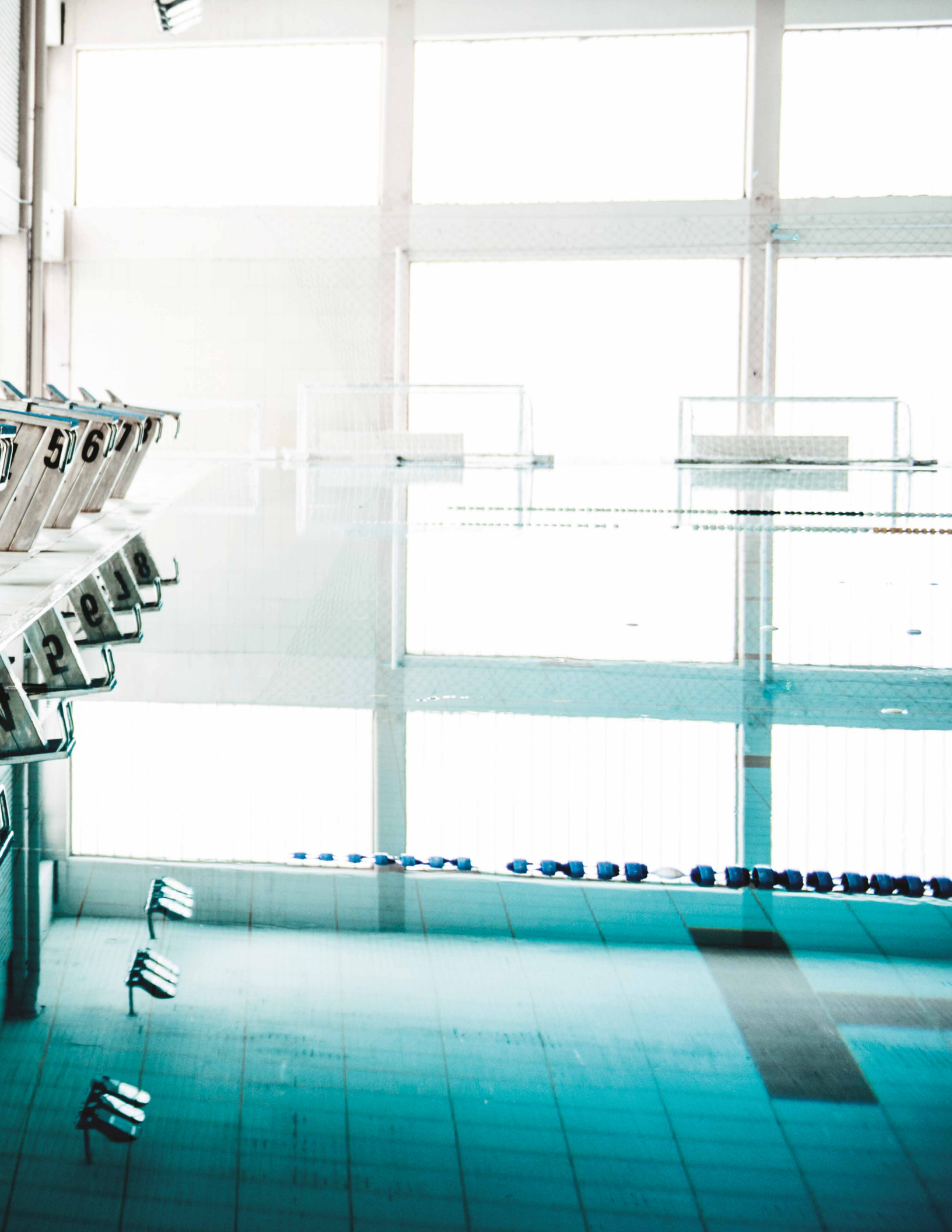
Power Configurations: 115 - 230 Vac, 50 - 60 Hz

Squeeze Tube Output: 2.5 oz (0.124" ID "Sanitizer" tube: 9.28 gpd, up to 30 psi)

Pump: Peristaltic, self-priming, self-checking 6 volt DC

### Features

- Easy setup, programming and maintenance means you spend less time in the field
- Cost-effective, even for low-volume operation
- Standard tube handles all pool chemicals: chlorine, acid, algaecide, clarifiers, etc.







# Your Choice, Our Commitment

People choose to do business with SEKO for one or more reasons, but ultimately it is their choice, and therefore they merit our commitment. "Our commitment" is total and not only to our customers, but also to each other and the Company's to its employees.

## Vision

**TO BE YOUR PARTNER  
OF CHOICE FOR DOSING  
SOLUTIONS, GLOBALLY**

SEKO, is a passionate, dedicated Global Family of Professionals. We listen to each of our Partners and are committed to deliver the right solution in the Hygiene, Water Treatment and Industrial Process markets.

## Values

**MUTUAL RESPECT, QUALITY  
AND SPIRIT OF COLLABORATION**

### MUTUAL RESPECT

Mutual Respect because doing business is about being able to generate trust between Customer and Supplier. We'll deliver against our commitments, on time and in a transparent fashion, so you know can plan for your own business needs.

### QUALITY

Quality for SEKO is a 360° reality. It covers not only the design, development, production and delivery of our products and solutions but it runs through the core professionalism of our teams.

### SPIRIT OF COLLABORATION

Spirit of Collaboration is fundamental to our success and SEKO prides itself on how we work as a worldwide team, blending multiple country teams and functions to bring solutions to a Customer request or market need from an idea to the real world in very short time, across our global presence and beyond.



# Your Choice, Our Commitment

In the modern Globalised world, being a privately owned Company has significant benefits especially for our Customers, our Partners. For over 40 years, SEKO has developed a Global organisation able to take the longer view, manage the pressure of the now, and to plan for the long term, delivering true Partnership for our Customers, with transparency and mutual respect for each other.

Whether it's for our reknown flexibility, our attention to detail, the high-quality products, or just the way we do business, we understand that it's Your Choice to do business with us. It is Our Commitment to fulfill your needs wherever you, our Customers are.



For more information about our portfolio, worldwide locations, approvals, certifications, and local representatives, please visit [www.seko.com](http://www.seko.com)



SEKO reserves the right to amend and change specifications without prior notice. All pictures shown are for illustration purpose only. Actual product may vary due to product enhancement. Published data may be subject to change.